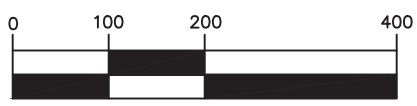
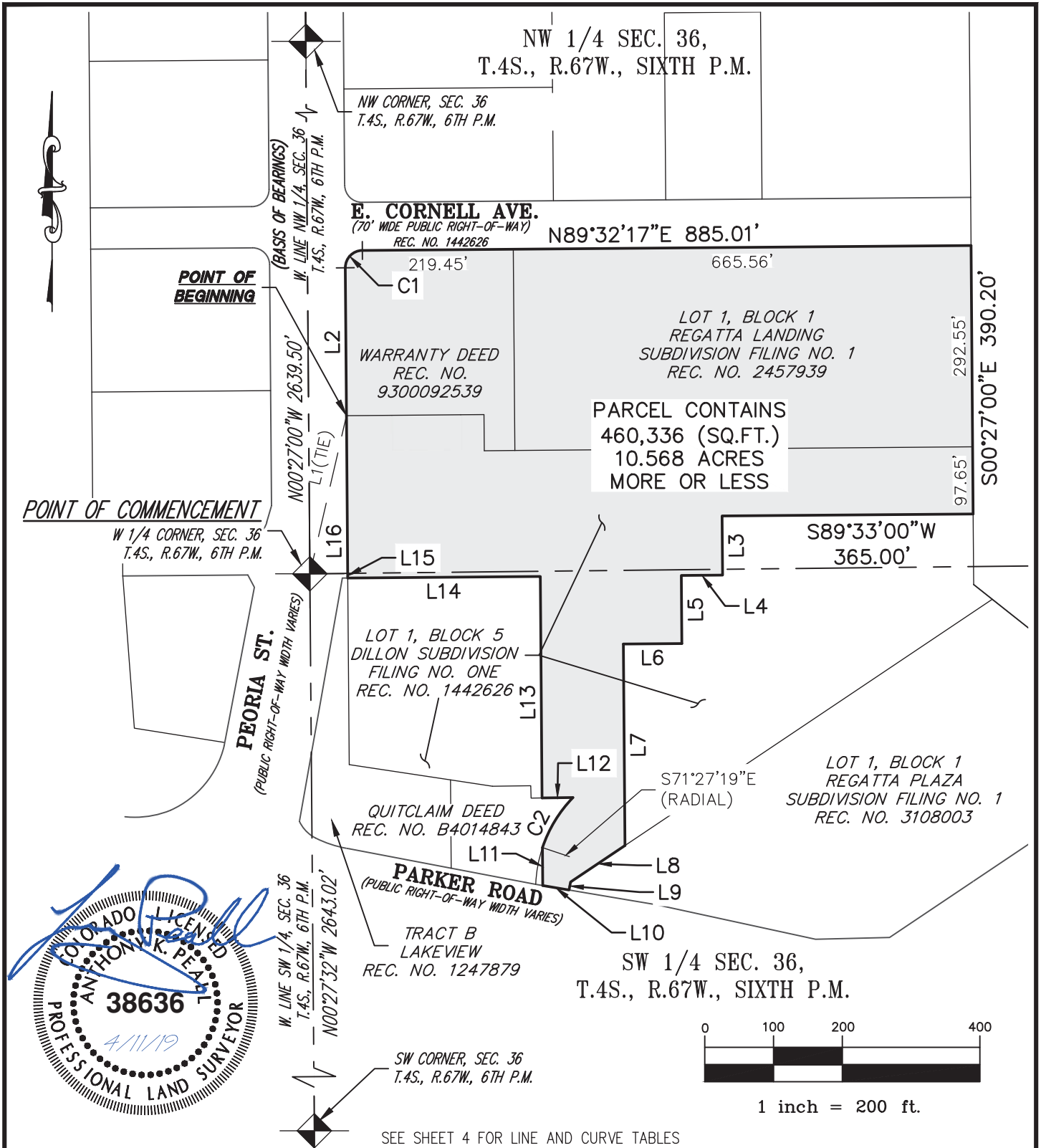


ILLUSTRATION TO EXHIBIT A



SEE SHEET 4 FOR LINE AND CURVE TABLES

NOTE: THIS DRAWING DOES NOT REPRESENT A MONUMENTED LAND SURVEY AND IS ONLY INTENDED TO DEPICT THE ATTACHED LEGAL DESCRIPTION.

PATH:
 DWG NAME: FUTURE INCLUSION AREA.DWG
 DWG: DLL CHK: TP
 DATE: 2019-04-09
 SCALE: 1" = 200'

AZTEC
 CONSULTANTS, INC.
 300 East Mineral Ave,
 Suite 1
 Littleton, Colorado 80122
 Phone: (303)713-1898
 Fax: (303)713-1897
www.aztecconsultants.com

THE POINT METROPOLITAN DISTRICT
 LOT 1 BLOCK 1 & LOT 1 BLOCK 5
 AURORA, COLORADO
 JOB NUMBER 48115-40 3 OF 4 SHEETS

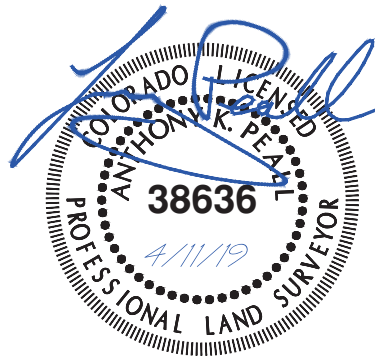


ILLUSTRATION TO EXHIBIT A

| LINE TABLE | | |
|------------|-------------|---------|
| LINE | BEARING | LENGTH |
| L1 | N13°02'07"E | 235.85' |
| L2 | N00°27'00"W | 215.01' |
| L3 | S00°27'00"E | 85.97' |
| L4 | S89°33'00"W | 60.00' |
| L5 | S00°27'00"E | 99.03' |
| L6 | S89°33'00"W | 85.00' |
| L7 | S00°27'00"E | 292.93' |
| L8 | S56°10'06"W | 95.18' |
| L9 | S10°54'40"W | 11.87' |
| L10 | N80°18'55"W | 38.79' |
| L11 | N00°27'00"W | 55.14' |
| L12 | S89°14'57"W | 44.87' |

| LINE TABLE | | |
|------------|-------------|---------|
| LINE | BEARING | LENGTH |
| L13 | N00°27'00"W | 321.91' |
| L14 | S89°33'00"W | 280.00' |
| L15 | N00°27'32"W | 6.73' |
| L16 | N00°27'00"W | 229.19' |

| CURVE TABLE | | | |
|-------------|-----------|---------|--------|
| CURVE | DELTA | RADIUS | LENGTH |
| C1 | 89°59'17" | 25.00' | 39.26' |
| C2 | 25°35'40" | 192.23' | 85.87' |



NOTE: THIS DRAWING DOES NOT REPRESENT A MONUMENTED LAND SURVEY AND IS ONLY INTENDED TO DEPICT THE ATTACHED LEGAL DESCRIPTION.

PATH: P:\LLD\DWG
 DWG NAME: FUTURE INCLUSION AREA.DWG
 DWG: DLL CHK: DSB
 DATE: 2016-07-19
 SCALE: 1" = 200'



300 East Mineral Ave,
 Suite 1
 Littleton, Colorado 80122
 Phone: (303)713-1898
 Fax: (303)713-1897
www.aztecconsultants.com

THE POINT METROPOLITAN DISTRICT
 LOT 1, BLOCK 1 & LOT 1, BLOCK 5
 AURORA, COLORADO

JOB NUMBER 48115-40

4 OF 4 SHEETS